



FONDAZIONE GUIDO BERNARDINI
BETTER EDUCATION FOR BETTER SCIENCE

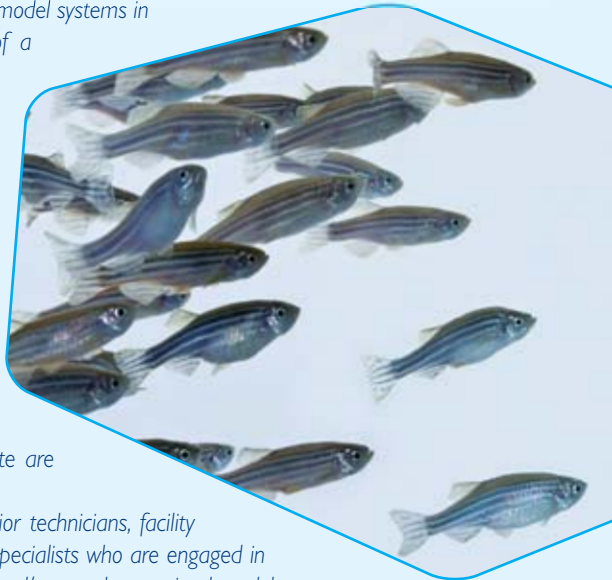


INTERNATIONAL WORKSHOP

Zebrafish: an animal model in biomedical research

Zebrafish is one of the most popular vertebrate model systems in today's research. This workshop is the result of a collaboration between FGB and COST action BM0804, the European Network on Fish Biomedical Models (EuFishBioMed). It will take place in Utrecht, at the Hubrecht Institute where one of the largest European Zebrafish research facilities is located. Lectures will provide the latest information on the organisation of a modern Zebrafish facility, animal husbandry and care, health monitoring, GMO technology, international guidelines and applied research technologies. Demonstrations and introduction to various aquatic systems in use at the Hubrecht Institute are part of the programme.

This workshop is addressed to researchers, senior technicians, facility managers, veterinarians and laboratory animal specialists who are engaged in the care and use of Zebrafish or plan to breed and/or use these animal models.



14TH to 15TH November 2011
Hubrecht Institute, Utrecht - the Netherlands



Monday 14TH of November

Welcome and Opening Remarks - by COST and FGB	09:30
Introduction: Use of Zebrafish in biomedical research: possibilities and limitations.	
<i>Stefan Schulte-Merker</i>	
Resources: Status of the KIT stock centre and exchange of life material	
<i>Robert Geisler</i>	
Legislation, Recommendations and Guidelines	
<i>Jan-Bas Prins and Zoltan M. Varga</i>	
Husbandry and Care: Organisation of a modern facility	
<i>tbd</i>	
Demonstrations: Choice of two, half an hour each	
• <i>fin clipping,</i>	
• <i>squeezing to obtain oocytes,</i>	
• <i>sperm preparation,</i>	
• <i>sperm freezing.</i>	

Tuesday 15TH of November

Opening	09:00
Diseases and Health issues	
<i>Zoltan M. Varga</i>	
Ethical issues	
<i>Chris Pool and Jan-Bas Prins</i>	
Final discussion and conclusions.	
Tour of the facility of the Hubrecht Institut.	
End of Workshop.	13:00

Scientific Committee

Stefan Schulte-Merker, Hubrecht Institute, Utrecht, The Netherlands

Jan-Bas Prins, LUMC, Leiden, The Netherlands

Faculty

Robert Geisler, Max Planck Institute for Developmental Biology, Tübingen, Germany

Chris Pool, Royal Academy of Sciences, Amsterdam, The Netherlands

Jan-Bas Prins, LUMC, Leiden, The Netherlands

Stefan Schulte-Merker, Hubrecht Institute, Utrecht, The Netherlands

Zoltan M. Varga, University of Oregon, Eugene OR, USA

Secretarial Support

Laura De Francesco

Workshop Venue

Hubrecht Institute Upsalalaan 8, Utrecht, The Netherlands

Arriving by train

From the **Utrecht Central Station**, you can take either a taxi or bus number 12 or 12S. Get out at the bus stop "Heidelberglaan". Walk up the "Heidelberglaan" in the direction of the UMCU until you reach the "Universiteitsweg". Turn left and walk up the "Universiteitsweg". Cross the road ("Leuvenlaan") and continue on the "Universiteitsweg". When this road makes a bend, carry straight on. This is the "Uppsalalaan". The institute is on the right and the main entrance is next to the sports ground.

Arriving by car

Upon reaching the A27 follow the directions Amersfoort until "De Uithof" is signed. After leaving the motorway turn left at the traffic lights. After the right hand bend take the first road to the right, which is the "Uppsalalaan". The institute is on the right hand side and the main entrance is next to the sports grounds.

Hotel Information

Attendees should make their own hotel reservations in Utrecht or De Bilt.



I PLAN TO ATTEND THE WORKSHOP “ZEBRAFISH:AN ANIMAL MODEL IN BIOMEDICAL RESEARCH”

Last Name

First Name

Title/Position

Organization/Company

Mail address

City

State

Zip

Phone

Fax

Mobile

Mail @

Invoice Details

Organization/Company

VAT Registration Number

Mail address

City

State

Zip

Registration Fee

50,00 €

The Registration Fee Includes

Participation in the Scientific Programme
Lunches and Coffee Breaks

Please fill in all the fields. Send copy of pre-registration to:

Fondazione Guido Bernardini | Via Caldera 21 20153 Milano Italy

Tel. : +39 02 45 07 67 87 • fax. : +39 02 45 07 02 12

secretary@fondazioneguidobernardini.org • www.fondazioneguidobernardini.org